

**TEK CLOVER**  
IT'S TAKEN CARE



# WAREHOUSE MANAGEMENT SYSTEM



**CLASSIC WMS**  
\* ROBUST CHAINED AUTOMATION \*

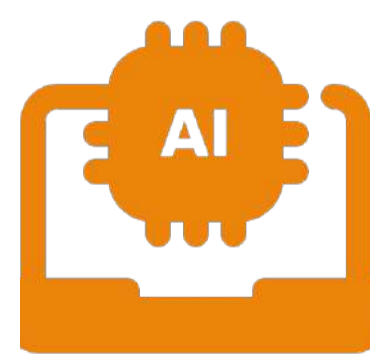
*A perfect choice for all businesses.... Choose From Two Powerful Versions:*

## Lite

- Essential Features
- Cost-Effective
- Quick Implementation

## Enterprise

- Advanced Capabilities
- Scalability
- Customized Fit-Gap Approach



### AI/ML Empowered

- Smart and powerful inventory/space Projections
- Customized / Optimized models to suit business rules Strategy determinations



### Future-Proof Technology

- Scalable Solutions
- CI/CD Flexi Microservice architecture to accommodate imminent technologies



### IoT Driven

- Real-Time Tracking and touch-free stock count
- Auto transaction confirmations
- Compatible with all smart sensors

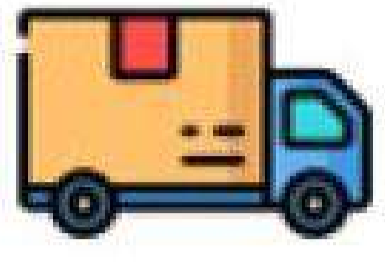


### Unique To Your Needs

- 100% Process Compatibility
- Quick ROI
- Promised CBA



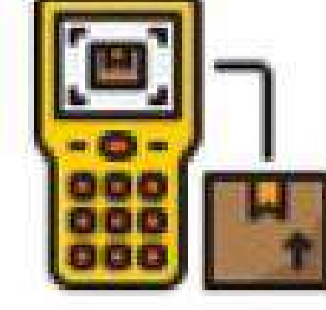
**INBOUND**



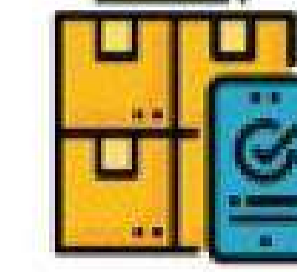
**TRANSFERS**



**OUTBOUND**



**STOCK COUNT**



**KEY FEATURES**



- Smart Putaway Strategies
- Optimization of Goods Receipt
- Internal Routing
- Cross Docking
- Palletization of SKU's
- HHT based on Receiving and Binning
- Seamless tracking of SKUs/MHE
- Batch/Serial/Variant management
- Back Order Processing
- Configurable Barcode Generation Process

- Supports Multiple Transfer Methods
  - Inhouse
  - Warehouse to Warehouse
  - Stock Type to Stock Type
  - SKU to SKU
- HHT based Bin to Bin Transfers
- One Step and Two Step Transfers
- Supports both individual and Mass transfer Process
- Ability to Schedule the transfers

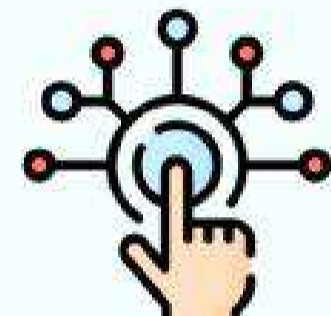
- Smart Picking strategies
- Splitting / Kitting
- HHT enabled Picking and Quality
- Resource Utilization
- Picking Order Optimization
- Reverse Logistics
- Delivery Management

- Support Multiple Stock Count Methods
  - Perpetual
  - Periodic
  - ABC
- HHT aided Stock Count Process
- Workflow mechanism for Write Off
- Allows Recount, Skip process

- Ready built API's for ERP, LMD, OMS etc,
- Smart sensor - IoT integration compatibility
- ML based Putaway and picking strategies
- AI/ML aided inventory, space, maintenance projections
- API's to aid IoT, XR/VR, 3rd parties.
- Custom Add-on's to support key business areas



Smart Warehouse Platform



Digitization



RPA via IoT, ML to automate process



Secured transactions across systems via ready built API's



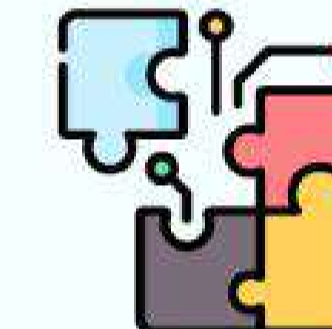
AI/ML aided business projections



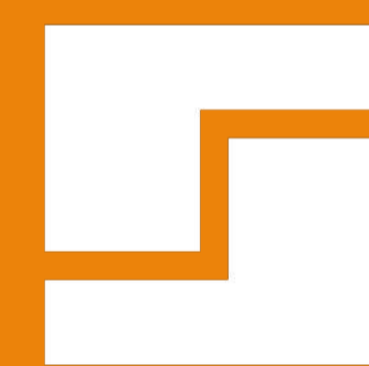
Wizard driven operations



Leveraging existing Infra for HHT's



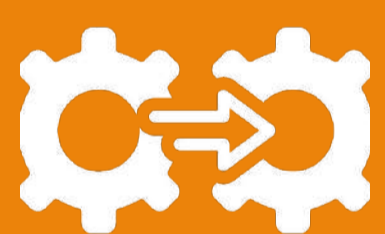
Swift and robust Integrations



**CLASSIC WMS**  
\* ROBUST CHAINED AUTOMATION \*

*Classic WMS is trusted by businesses for its superior*

**Process Compatibility**



- Quickly and easily adapts to all your business processes
- Addresses micro-level needs of various industrial vectors



**Profitability**

- Quick realisation of Return On Investment
- Minimal stabilisation time and reduced costs

**Technology**



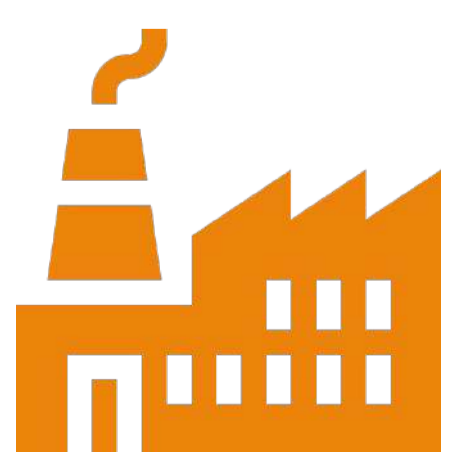
- Keeps updating itself to handle increasing demands and futuristic technologies
- Scalability through IoT, Machine Learning, and Microservice Architecture



**Strategising**

- Provisions for all possible strategies as per your business needs
- Includes Zone, Wave, FIFO, FEFO, Fast/Slow moving, Capacity/Customer based, Temperature specific storages, and much more

**Industry Verticals We Serve**



Manufacturing



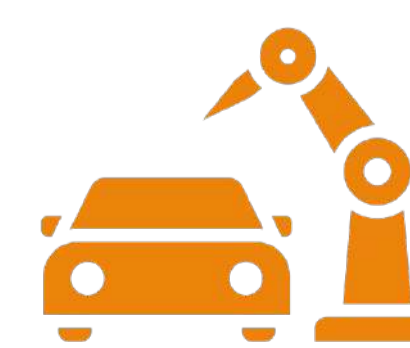
3PL



Retail



Pharma



Automobile



Trading



Cold Storage

