



MOPTro[®] - SNAIL[®]

Picking Simplified

W2H - Warehouse 2 Home | Decarbonizing Mobility





#WeAreElectric



WASP®

Our



SNAIL®

Product



LITE®

Line



MOPTR0 B®

E-Mobility Solutions | Quick Commerce | Picking Simplified

Warehouse 2 Home

W2H

Decarbonizing Mobility



WASP®

Accelerate putaway process by 50%.

[Read more about this product](#)



LITE®

Speed up dispatch by 30%.

[Read more about this product](#)



SNAIL®

Increase picker productivity by 30%.

[Read more about this product](#)



Moptr0 B®

Reduce last mile delivery cost by 50%.

[Read more about this product](#)



Powered By 48V Technology

Solving every Small and Big Mobility Problem with our EVs

About

MOPTro[®] - SNAIL[®]

Industrial Mobility Solution

MOPTro SNAIL is a bi-directional picking solution developed on 48V platform to address the productivity needs of E/Q commerce warehouses.

SNAIL with its unique set of features like 'Voice based picking', 'Path optimization' algorithm, 'Error free picking' and 'onboard picking' app is a one stop solution for customers in warehouses to increase productivity, reduce human error and improve customer satisfaction.



Range : 25 Km/Charge*



Charging Time : 4 Hrs



Max Speed : 15 Kmph



Max Payload : 120 Kgs



Increase in Productivity



Accurate Picking



Reduction in Training cost



Reduction in Picker Fatigue



* Variable

The appearance and features are indicative, and may vary from model to model

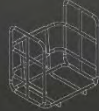
MOPTro-Snail

Modular | Scalable

One Product-Multiple Applications

MOPTro SNAIL is built on a modular scalable platform with a number of attachments and feature sets, which can be configured to enhance vehicle utility and performance based on customer needs. Few of the configurations are listed below.

Configurable platform
with varied attachments



Four Tote Configuration



Six Tote Configuration



Two Tote Carriers Configuration



Ladder Configuration

The appearance and features are indicative, and may vary from model to model

MOPTro-Snail

Picking

Picking is the most important and value creation part of Q/E-commerce business.

SNAIL with its patented multi-tote configuration with integrated voice based picking solution, touch screen display and path optimization algorithm ensures faster picking and reduces the picker walking/travel time resulting in higher productivity.



Bi-Directional Mobility



IOT-Based Diagnostics



Improves Productivity



Voice Based Picking



On-board Scanning



Battery Swapping



Touch Screen Display



Path Optimization



The appearance and features are indicative, and may vary from model to model



MOPTro-Snail

Putaway

SNAIL with its Voice based put away solution is best suited for warehouses where both 'Bin accuracy' and 'Bin fill' rates are critical to business growth.

MOPTro SNAIL with its multiple tote configuration is suitable for put away process in E/Q commerce, Auto, Pharma and Apparel Industry.



Narrow Aisle Movement



Anti-Collision



No Redundant Turns



Quick Ingress and egress



Path Optimization



Battery Swapping

The appearance and features are indicative, and may vary from model to model



Our Product Line

Decarbonizing Mobility

Powered By 48V Technology

Solving every Small and Big Mobility Problem with our EVs



Scan For More Details

www.moptro.com



Product of
Greendzine Tech



SPECIFICATION TYPE

4 Tote Configuration

6 Tote Configuration

Twin Carrier Configuration

Ladder Configuration

MAX PAYLOAD*

Upto 120 Kgs*

Upto 120 Kgs*

Upto 120 Kgs*

Upto 120 Kgs*

RANGE*

15-25 Km/Charge

15-25 Km/Charge

15-25 Km/Charge

15-25 Km/Charge

MAX SPEED

15 Kmph

15 Kmph

15 Kmph

15 Kmph

NO. OF TOTE CARRIERS

4

6

2

4

OVERALL DIMENSIONS (L X B X H)*

1805 x 630 x 1315 mm

1805 x 630 x 1315 mm

1805 x 630 x 1315 mm

1805 x 720 x 1315 mm

FEATURES

Picking Solution,
IOT, Voice Based Picking

Picking Solution,
IOT, Voice Based Picking

Picking Solution,
IOT, Voice Based Picking

Picking Solution,
Retractable Ladder

BENEFITS

**Increase in Picker
Productivity by 30%**

**Increase in Picking
Accuracy by 100%**

**Reduction in Training
Cost by 50%**

**Reduction in Picker
Fatigue by 80%**

* Indicates variable value, may vary from model to model.

MOPTro[®] SNAIL[®] - SPECIFICATIONS

TITLE	SL NO.	PARAMETER	UOM	VALUE / SPECIFICATION
General Information	1.	Model	NA	MOPTro SNAIL
	2.	Vehicle Type	NA	Battery Powered
	3.	Special Features	NA	IOT, Analytics, BT Connectivity, WIFI Connectivity, On-Board Scanner, Picking Solution
	A.4	Direction of movement	NA	Bi - Directional
	A.5	Operating Voltage	V	48V DC
Performance & Capacity	B.1	Maximum Speed	Kmph	15 (Configurable between 10 to 15)
	B.2	Max Load Carrying capacity	Kg	80
	B.3	Max Distance per charge	Kms	25
	B.4	Max Noise level for equipment	dB(A)	75
	B.5	Average weight of Operator	Kg	75
Dimension and weight	C.1	Overall Legth	mm	1806
	C.2	Overall width	mm	630
	C.3	Overall height	mm	1308
	C.4	Ground Clearance	mm	60
	C.5	Rider Platform Width	mm	375
	C.6	Wheelbase	mm	900
	C.7	Turning Radius	mm	1250
	C.8	Curb Weight (With lead acid battery)	Kg	110

MOPTro[®] SNAIL[®] - SPECIFICATIONS

TITLE	SL NO.	PARAMETER	UOM	VALUE / SPECIFICATION
Tote Carrier	1.	Number of tote carriers	Nos	4
	2.	Max Load carrying capacity / Tote carrier	Kg	20
	3.	Tote Carrier inner dimensions	mm	570 (L) x 370 (B)
	D.4	Suitable tote size for 4 tote configuration	mm	Outer Dimension : 626(L) x 381(B) x 300(H) Inner Dimension : 590(L) x 345(B) x 293(H)
	D.5	Suitable tote size for 6 tote configuration	mm	Outer Dimension : 540(L) x 340(B) x 220(H) Inner Dimension : 520(L) x 300(B) x 213(H)
Battery & Charger (Li-Ion) - optional	E.1	Battery	NA	48V, 24Ah, Li - Ion Battery
	E.2	Battery Life - Charging Cycles	Nos	500
	E.3	Full Charging Time	Hrs	4 to 6
	E.4	Charger Input	NA	Single Phase AC, 15 Amps
	E.5	Power consumed per full charge	Units	1
User Interface & Transmission	F.1	Throttle	NA	Wrist Activated
	F.2	Brake	NA	Lever Activated
	F.3	Direction Change	NA	Through Push Button
	F.4	Battery Status Indicator	NA	RED LED in handlebar-Blinking indicates low battery
	F.5	Active Direction Indicator	NA	RED LED in handlebar - ON/OFF
	F.6	Motor Specification	NA	48V, PMBLDC, 500W
	F.7	Number of motors	NA	2

MOPTro[®] SNAIL[®] - SPECIFICATIONS

TITLE SL NO.	PARAMETER	UOM	VALUE / SPECIFICATION
Wheel & Brakes	1.	Number of drive wheels	Qty 2
	2.	Drive wheel type	NA Custom built 10 - Inch tyre, Pneumatic with tube
	3.	Number of idle wheels	NA 2
	4.	Idle wheel type	NA Caster wheel, Nylon
	5.	Brake type in drive wheels	NA Disc brake + Electronic Motor cut-off
Safety & Protection	H.1	Emergency Stopper	NA Emergency stop switch in handlebars
	H.2	Safety Lights	NA Blinking LED Lights in both directions
	H.3	Horn	NA 90 dB Hooter
	H.4	Ingress protection	NA IP51
	H.5	Battery Protection	NA Low voltage cut-off High voltage cut-off Over load cut-off
MSC	I.1	Colour Combination	NA Matte Black & GD Orange
	I.2	Colour Finish	NA Powder Coated
Optional Features	J.1	LCD Display	NA On-Board mobile Display
	J.2	User Login & Authentication	NA J.1+Mobile App with login authentication
	J.3	Scanning Solution	NA J.1+On-Board USB Scanner(1D)
	J.4	Picking Solution	NA J.1+J.3 +Integration of scanner with customer app

MOPTro[®] SNAIL[®] - SPECIFICATIONS

TITLE	SL NO.	PARAMETER	UOM	VALUE / SPECIFICATION
Optional Features	5.	Picking App	NA	J.1+J.3 +Integration of GDT-PICKER ^{™**} mobile app with WMS and configuration of PAKA ^{™**} in app
	6.	IOT & Data Analytics	NA	J.1 + Integration of vehicle with customer server & GDT-CONNECT ^{™***} mobile and web application
	7.	Battery Swapping	NA	Option to swap discharged battery with charged pack (Option only available for Li-Ion pack)

* GDT-PICKERTM- Android based picking application with path optimization algorithm

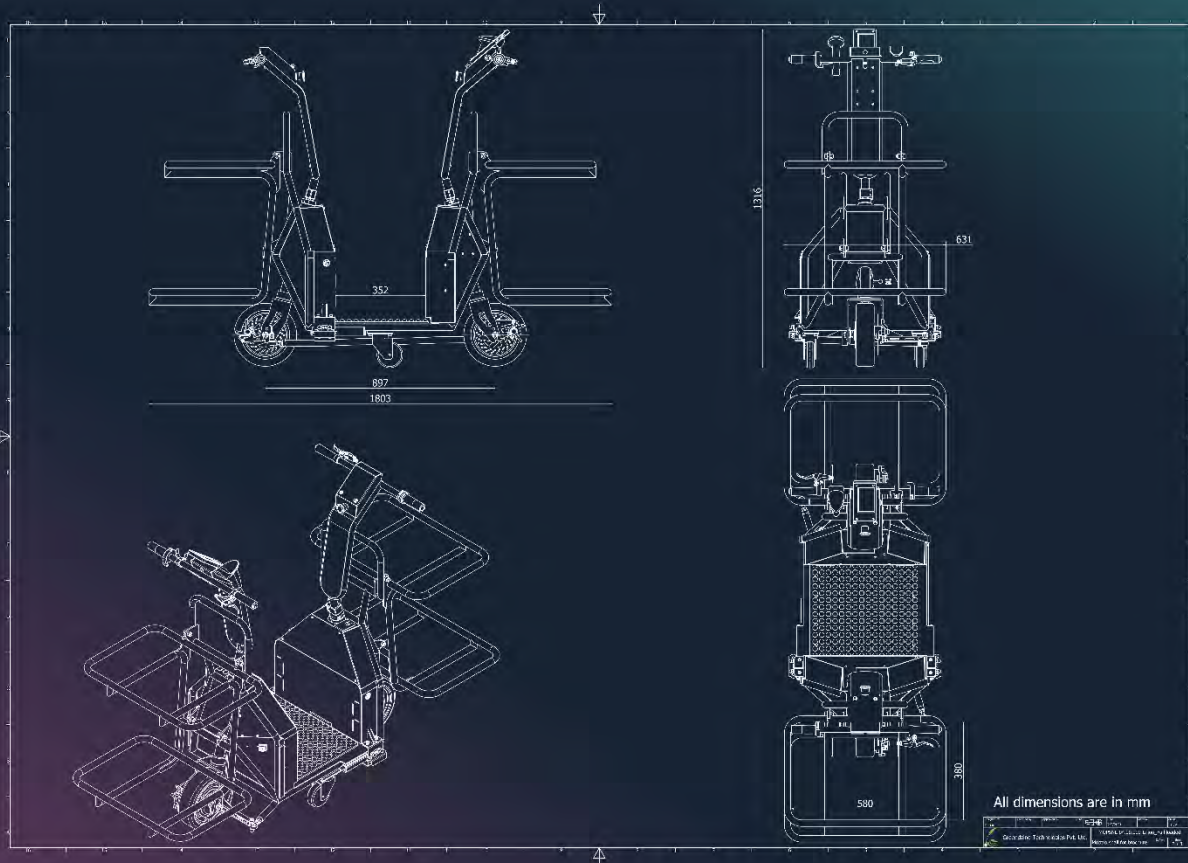
** PAKA - Path optimization algorithm

*** GDT - CONNECT -TMWeb/Mobile app for customers to access vehicle diagnostics data and perform vehicle analytics

FLOOR CONDITIONS ON WHICH MOPTro[™] SNAIL CAN BE USED

- Concrete floors without humps and potholes
- Mezzanine floors with flat surface (steel, checker plate deck, perforated deck, MDF)

MOPTro[®] SNAIL[®] - SPECIFICATIONS



Disclaimer: These specifications are subject to change without prior notice.
Please consult your local dealer/distributor, for detailed specifications



Decarbonizing Mobility

3
Markets

6
Products

30+
Patents

7+
Years of EV
Manufacturing

70%
Common Parts

Digital Twin

Greendzine Technologies Pvt Ltd

Bengaluru, Karnataka, Pin – 560 100
www.greendzine.in

+91 82967 69875

sales@greendzine.in

Greendzine Tech

greendzinetech



Visit www.moptro.com

For Internal Use Only