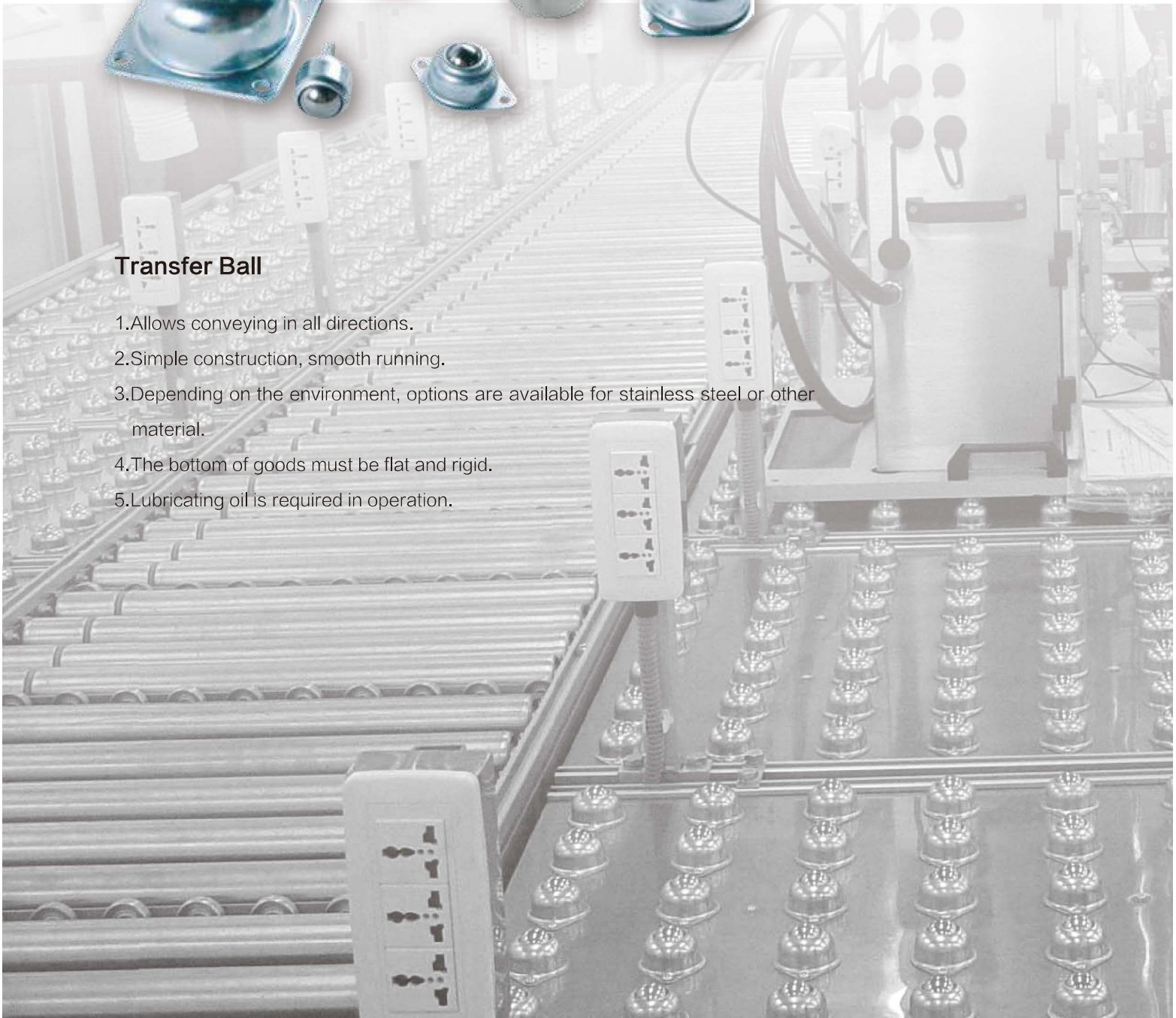


Ball Transfer



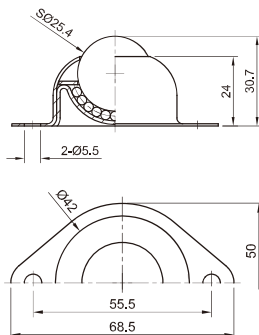
Transfer Ball

1. Allows conveying in all directions.
2. Simple construction, smooth running.
3. Depending on the environment, options are available for stainless steel or other material.
4. The bottom of goods must be flat and rigid.
5. Lubricating oil is required in operation.



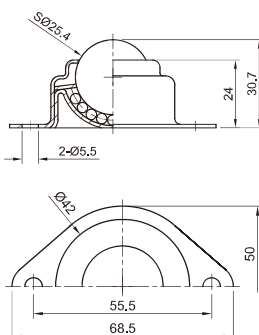


WA-01-A



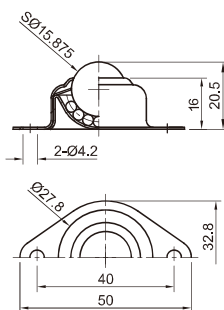
Body & surface	Steel, zinc plated
Ball material	Q235
Static load(kg)	25
Dynamic load(kg)	30
Weight(g)	142

WA-01-B



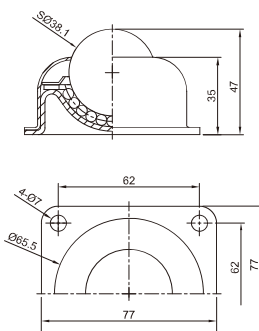
Body & surface	Stainless steel, 304
Ball material	Stainless steel, 202
Static load(kg)	25
Dynamic load(kg)	30
Weight(g)	136

WA-01-C



Body & surface	Steel, zinc plated
Ball material	Q235
Static load(kg)	15
Dynamic load(kg)	20
Weight(g)	38

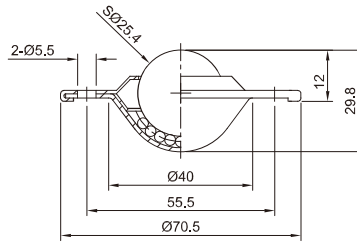
WA-02



Body & surface	Steel, zinc plated
Ball material	Q235
Static load(kg)	90
Dynamic load(kg)	110
Weight(g)	480

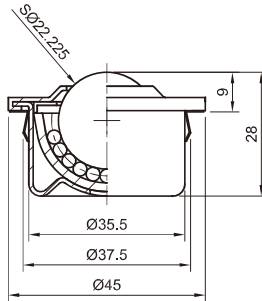
Ball Transfer

WB-01



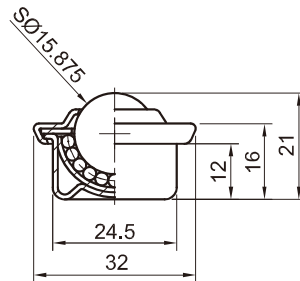
Body & surface	Steel, zinc plated
Ball material	Q235
Static load(kg)	45
Dynamic load(kg)	55
Weight(g)	147

WC-02-T



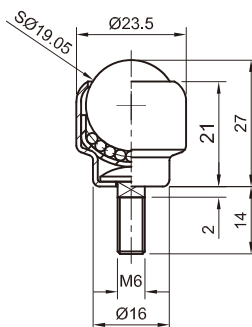
Body & surface	Steel, zinc plated
Ball material	Q235
Static load(kg)	40
Dynamic load(kg)	50
Weight(g)	126

WC-03



Body & surface	Steel, zinc plated
Ball material	Q235
Static load(kg)	15
Dynamic load(kg)	17
Weight(g)	44

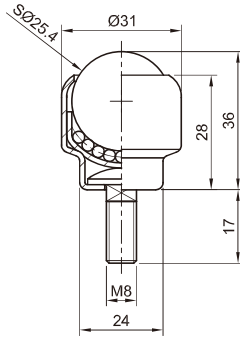
WD-01



Body & surface	Steel, zinc plated
Ball material	Q235
Static load(kg)	30
Dynamic load(kg)	40
Weight(g)	50

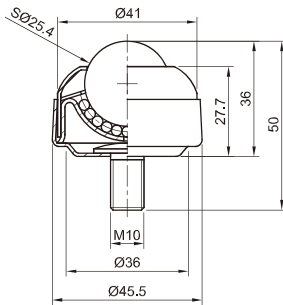


WD-02



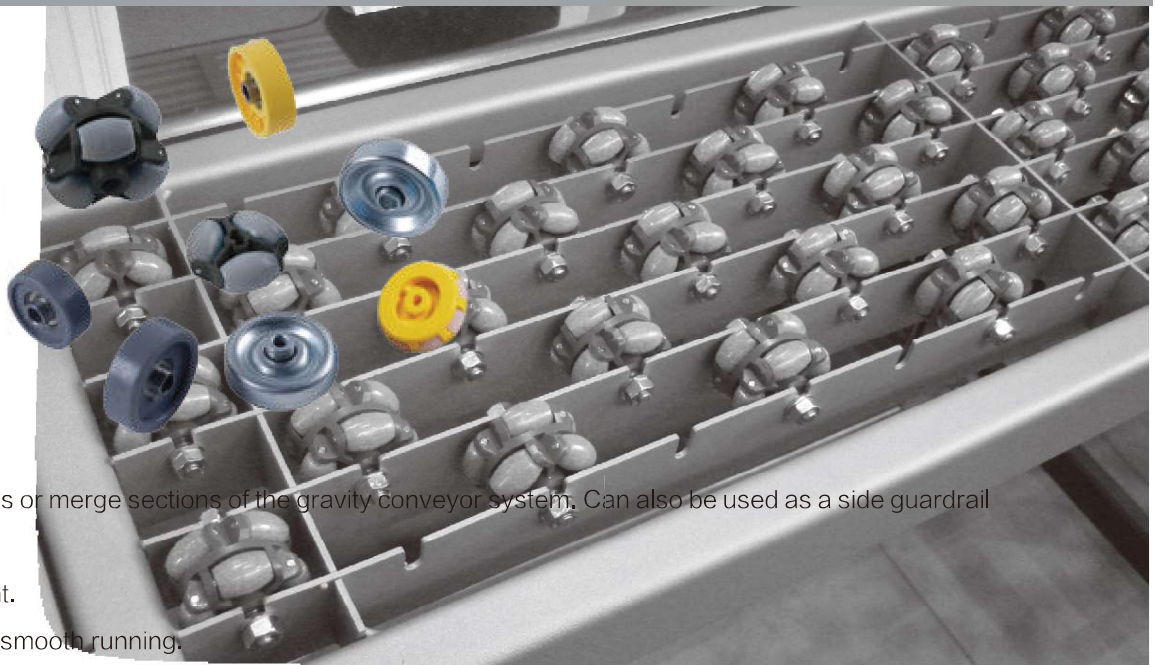
Body & surface	Steel, zinc plated
Ball material	Q235
Static load(kg)	40
Dynamic load(kg)	50
Weight(g)	117

WD-03



Body & surface	Steel, zinc plated
Ball material	Q235
Static load(kg)	40
Dynamic load(kg)	50
Weight(g)	171

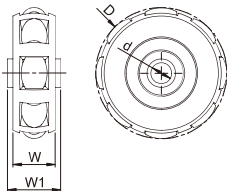
Skate Wheel



Skate Wheel

1. Can be used in curves or merge sections of the gravity conveyor system. Can also be used as a side guardrail or guide.
2. Small and light weight.
3. Simple construction, smooth running.
4. Depending on the environment, options are available for steel or plastic wheels.
5. The bottom of goods must be flat and rigid.

GD Series



Series	Material	d	D	W	W1	Static load(kg)	Dynamic load (kg)	Weight (g)
GD-01A-8	POM+PA6	Φ8.3	Φ51	16.5	20.5	8	10	29
GD-02A-12		Φ12.3	Φ51	16.5	20.5			27
GD-01B-10		Φ10.2	Φ51	16.5	16.5			27
GD-01C-13		Φ13.5	Φ51	16.5	16.5			26
GD-02-13K		Φ13	Φ51	16.5	16.5			25
GD-02E-6		Φ6.5	Φ51	16.5	16.5			26
GD-03A-10		Φ10.5	Φ40	15	15			14
GD-03C-10		Φ10	Φ30	12	12			7



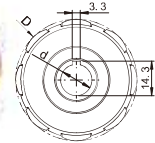
GD-01A-8/GD-02A-12



GD-01B-10/GD-02E-6



GD-02-13K



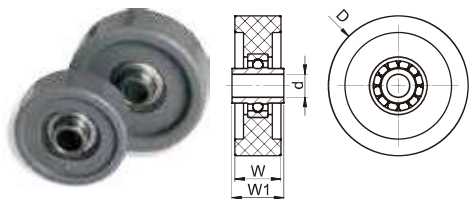
GD-01C-13/GD-03A-10



GD-03C-10

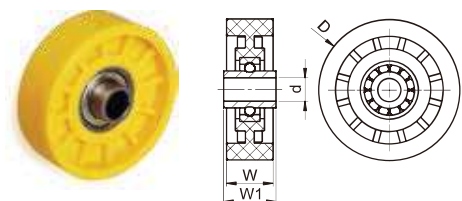


GA-01 Series



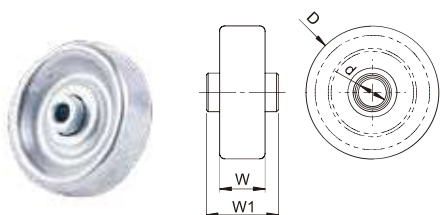
Series	Material	d	D	W	W1	Static load(kg)	Dynamic load(kg)	Weight (g)
GA-01-8	ABS	Φ8.1	Φ48.5	16	18	40	60	35
GA-01A-8	ABS	Φ8.1	Φ38	14.3	18	35	50	26

GA-02 Series



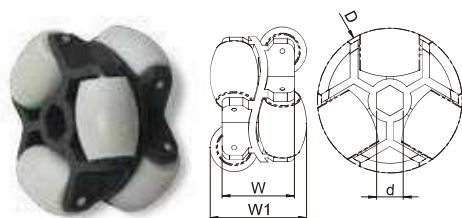
Series	Material	d	D	W	W1	Static load(kg)	Dynamic load(kg)	Weight (g)
GA-02-8	ABS	Φ8.1	Φ48.5	16	18	40	60	30

GB Series



Series	Material	d	D	W	W1	Static load(kg)	Dynamic load(kg)	Weight (g)
GB-02A-8	Steel, zinc plated	Φ8.1	Φ49	14.5	20.6	10	15	66

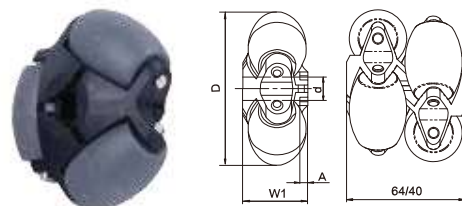
WH Series



Series	Material	d	D	W	W1	Static load(kg)	Dynamic load(kg)	Weight (g)
WH-01-11hex	Reinforced nylon	11hex	Φ60	30	40	25	25	75
WH-02-12		Φ12	Φ60	30	40	25	25	75
WH-05-8		Φ8.2	Φ50	40	37	20	20	65

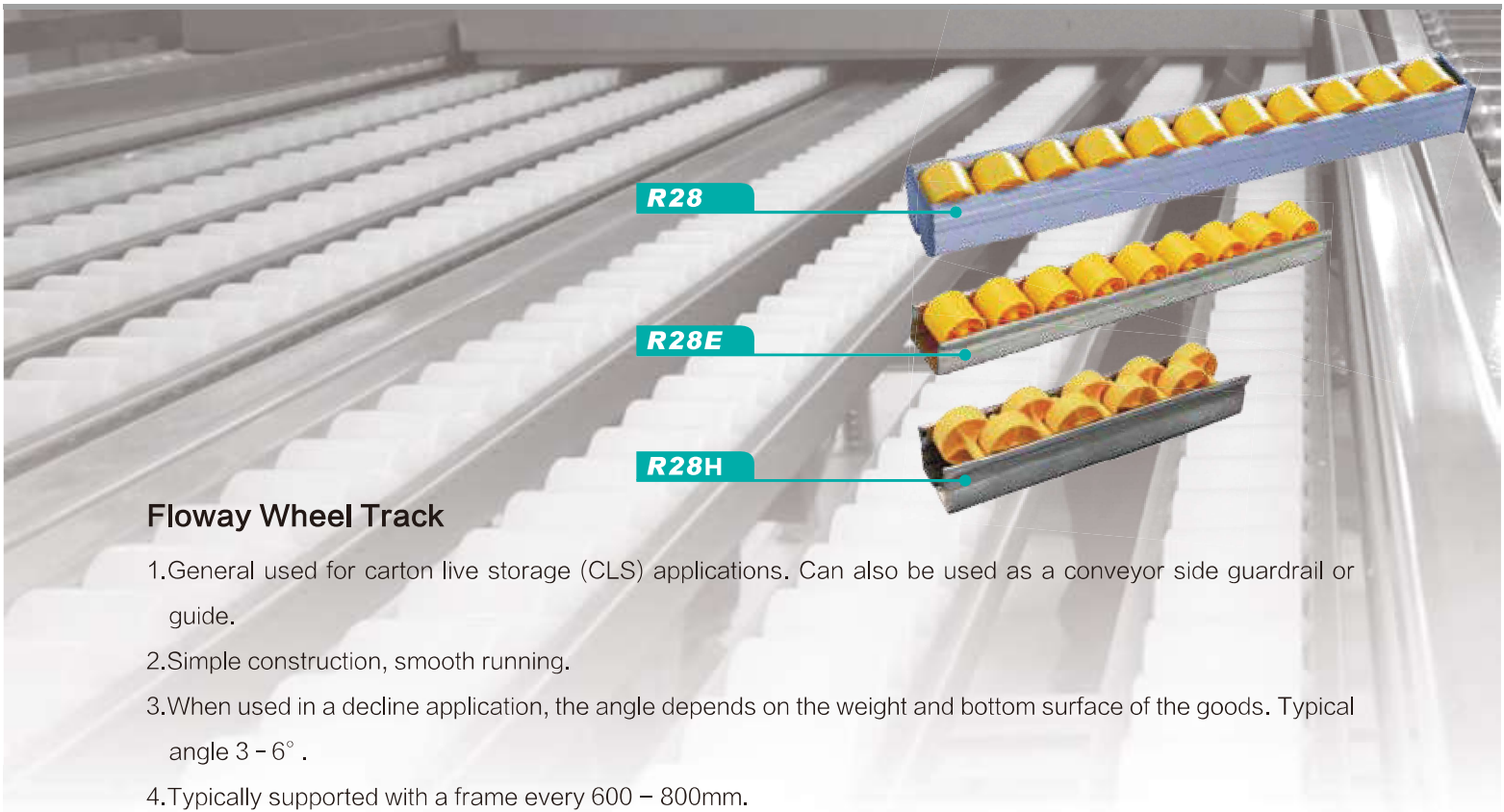
WE Series

Two combinations



Series	Material	d	D	W1	A	Static load(kg)	Dynamic load(kg)	Weight (g)
WE-01-12	PA66	Φ12.5	Φ80	34	4	25	25	100
WE-02-8	PA66	Φ8.3	Φ48	21.5	3	10	10	20

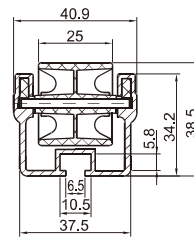
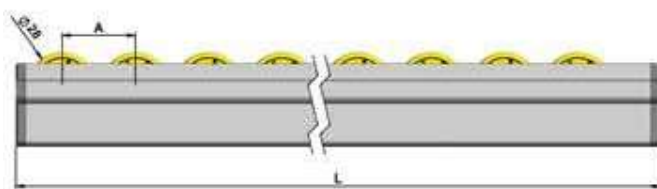
Floway Wheel Track



Floway Wheel Track

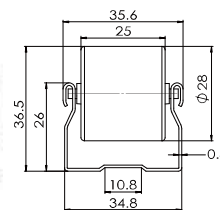
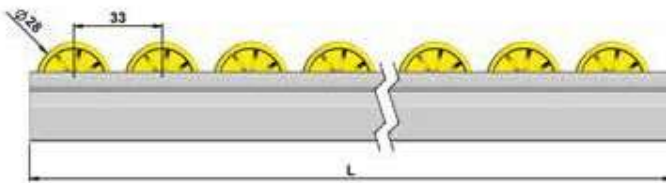
1. General used for carton live storage (CLS) applications. Can also be used as a conveyor side guardrail or guide.
2. Simple construction, smooth running.
3. When used in a decline application, the angle depends on the weight and bottom surface of the goods. Typical angle 3 - 6° .
4. Typically supported with a frame every 600 - 800mm.

R28



Frame	Aluminum
Wheel	ABS
Load	12.5kg/m
Wheel pitch	A=30/45mm
Part No.	R28-A-L

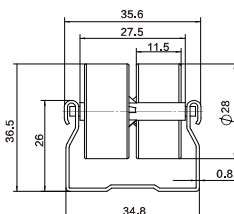
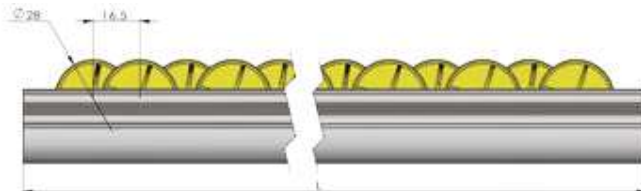
R28E



Frame	Steel, zinc-plated
Wheel	ABS
Load	12.5kg/m
Part No.	R28E-L

⚙️ Anti-static is available (black wheel)

R28H



Frame	Steel, zinc-plated
Wheel	ABS
Load	12.5kg/m
Part No.	R28H-L

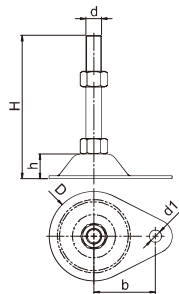


Adjustable Foot

1. Threaded height adjustment. Used to level or adjust the height or incline of a conveyor.
2. Manufactured from zinc plated steel. Stainless steel options available.

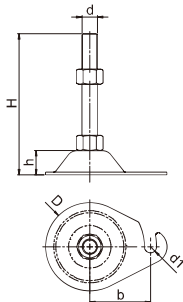


BA Series



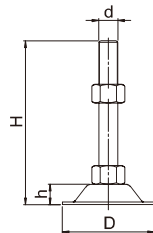
Type	d	D	H	h	b	d1	Load(kg)	Weight(g)
BA-14	M14	Φ80	128	22	55	Φ11	160	290
BA-16	M16	Φ80	156	22	55	Φ11	180	367

BB Series



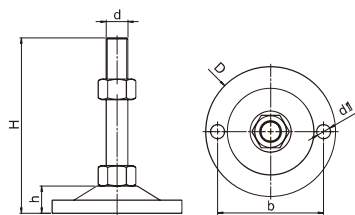
Type	d	D	H	h	b	d1	Load(kg)	Weight(g)
BB-14	M14	Φ80	128	22	55	Φ11	160	295
BB-16	M16	Φ80	156	22	55	Φ11	180	363

BJ Series



Type	d	D	H	h	Load(kg)	Weight(g)
BJ-12	M12	Φ68	116	15	80	153
BJ-16	M16	Φ68	148	14	140	293

BF Series



Type	d	D	H	h	b	d1	Load(kg)	Weight(g)
BF-20	M20	Φ120	162	25	98	Φ12	300	1400



ZHEJIANG DAMON INDUSTRY EQUIPMENT CO.,LTD

Add: Shangqiang Industrial Park, Daixi, Huzhou, China

Tel: +86-572-3826 065 / 3826 066

Fax: +86-572-3826 080

Email: sales@damonroller.com

Web: www.damonroller.com

Romania

DAMON Industrial Europe Srl

Address: Apahida, Libertatii Str., No.21, 407035, Cluj,

Romania

Tel: 0040-364130050

Email: sales@damonroller.ro

Web: www.damonroller.com

Australia

DAMON Australia

Address: 30 Grasslands Avenue Craigieburn VIC

3064, Australia

Tel: 0061-393337034

Fax: 0061-393084896

E-mail: info@damon-group.com.au

Web: www.damon-group.com.au

America

DA Roller Corporation

Address: 11310 Rockfield Ct, Cincinnati, OH 45241,

USA.

Tel: 001-5138981850

Email: info@daroller.com

Web: www.daroller.com

Japan

Kyowa Manufacturing Co., Ltd.

Address: 570-10 Kubota-cho, Kasai-city, Hyogo

pref. 675-2364 JAPAN

Tel : 0081-790420601

Fax: 0081-790424895

Email: sales@pulseroller.com

Web: www.pulseroller.com

Singapore

Rollflex Pte. Ltd.

Address: Blk 22, Woodlands Link, #04-70, Singapore

738734

Tel: 0065-62570811

Fax: 0065-62573811

E-mail: sales.sg@rollflexmfg.com

Web: www.rollflexmfg.com

Indonesia

PT. Rollflex Manufacturing Indonesia

Address: Taman Tekno BSD, Sektor XI Blok H-11 No.

7 Serpong, Tangerang 15314

Tel: 006221-36720399

Fax: 006221-36720388

E-mail: sales.id@rollflexmfg.com

Web: www.rollflexmfg.com

Malaysia

Rollflex (M) Sdn.Bhd.

Address: Lot58908, No.3399, Jalan Pekeliling Tanjung

27/2 Kawasan Perindustrian Indahpura, 81000 Kulai,

Johor, Malaysia.

Tel: 006012-7272896

E-mail: sales.my@rollflexmfg.com

Web: www.rollflexmfg.com

Because the printed copy is updated slowly,
so for the newest product informations, pls refer to the official website.